

Subject: Fwd: Skyline College President's Council's Success Summit from Carolyn Livengood.
From: Miller, Ray (raymiller@ci.brisbane.ca.us)
To: rc.miller@yahoo.com;
Date: Friday, September 6, 2013 2:25 PM

Sent from my iPad

Begin forwarded message:

From: "Carolyn Livengood"
<carolynlivengood34@gmail.com<mailto:carolynlivengood34@gmail.com>>
To: "Miller, Ray" <raymiller@ci.brisbane.ca.us<mailto:raymiller@ci.brisbane.ca.us>>, "Conway,
Clarke" <cconway@ci.brisbane.ca.us<mailto:cconway@ci.brisbane.ca.us>>, "Lentz, Cliff"
<cliffrentz@ci.brisbane.ca.us<mailto:cliffrentz@ci.brisbane.ca.us>>, "O'Connell, Terry"
<terryoconnell@ci.brisbane.ca.us<mailto:terryoconnell@ci.brisbane.ca.us>>
Subject: Re: Skyline College President's Council's Success Summit from Carolyn Livengood.

Dear Mayor Miller and fellow Councilmembers:

If you haven't already heard about the first ever Success Summit being held by the Skyline College President's Council, I am attaching a copy of the brochure, which will give you an idea of the importance of this event and the people involved.

As a member of the President's Council, I am hoping that you will be able to attend the event, which costs \$150 and includes breakfast, lunch, materials, and three dynamic breakout sessions: 1. Communications: Are We Losing Touch?; 2. Jobs: Connecting the Needs; and 3. Transportation: The Last Mile.

I will be calling you within the next few days to see if you will be attending or you can certainly reply to me by email or phone at: 650-355-5533 if you prefer.

Take care.
Carolyn

P.S. For some time, I have been trying to find someone from Brisbane to nominate for the Skyline College President's Council but have not had any luck so far. I would be delighted if you could send me some suggestions.

I also have been trying to urge a nomination from your city for the San Mateo County Women's Hall of Fame.

Hope you can put on your thinking caps as Brisbane is an important part of our county.

Enrollment Information

Summit Fee:
\$150 fee includes
breakfast, lunch,
materials and
3 dynamic breakout sessions.

Location:
The Summit will be held at
Skyline College
3300 College Drive,
San Bruno, Ca 94066
Student & Community Center, Bldg. 6

Enrollment:
Limited to 150 participants on a
first-come, first-served basis

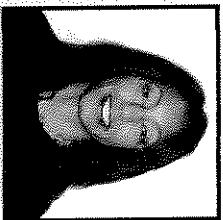
To Register go to:
www.skylinesuccesssummit.com

For more information:
(650) 738-4325

Keynote Speakers:

**Marlena
Jackson,**
*Scientist,
Genetech*

*Founder,
NewGenGirls*



NewGenGirls is a grassroots organization for introducing girls from under-represented communities to the wonders of science and technology, helping to lead them on a path of success in a diverse range of science professions.

**Angela
Batinovich,**
*CEO, SF Bulls
Hockey Team*

Recognized as a top sports executive and previously the owner and Managing Partner of a professional Lacrosse team.



Partial List of Presenters, Moderators and Panelists

Sandy Close, New America Media, Executive Director
Linda Collins, Career Ladders
John Ford, Peninsula Congestion Relief Alliance
Roseanne Foust, President, CEO, SAMCEDA
Laelle Guevara, Communication Director,
Senator Jerry Hill's Office, former SF Chronicle Editor
Chuck Harvey, San Mateo Co. Transportation Authority
Don Horsley, President, San Mateo Board of Supervisors
Chris Hunter, Past Editor Pacifica Tribune, Chief of Staff, Supervisor Don Horsley's Office
Lloyd LaCuesta - Former TV personality and San Jose State Communications Professor
Anne LaClair, President, CEO, San Mateo County Silicon Valley Convention and Visitors Bureau
Jon Mays, Editor, San Mateo Daily Journal
Gene Mullin, Former California State Assemblyman, Past Mayor of SF
Kevin Mullin, California State Assemblyman
Bill Nack, Building and Trades Council, San Mateo County
Jon Rubin, Former Board Member, MTC,
Executive Director, Peninsula Coalition
Adrienne Tisser, San Mateo Board of Supervisors, Transportation Authority, San Mateo County

Support the Success Summit

Provide a scholarship to the
Success Summit
Become a Success Summit Sponsor!
Please contact us.

For more information or to secure your
sponsorship today, contact
Linda Bertelotti at (650) 738-7141.

Thank You Supporting Sponsors

First National Bank of Northern California
Recology of San Bruno
San Mateo County Board of Realtors
San Mateo Credit Union
Provident Credit Union
PG&E
SMCCCD Auxiliary Services & Enterprise Operations

The Success Summit was formed in collaboration with
San Mateo County Silicon Valley
Convention and Visitors Bureau
SAMCEDA
San Mateo County Community College District
San Mateo County
Community College District Foundation

"The Success Summit is an excellent opportunity to gain key insight on local economic development, community history and public affairs. It will provide that rare opportunity to meet local government and business leaders."

—Gene Mullin,
former California State Assembly Member &
former City Council Member

"The wisest mind has something yet to learn."
—George Santayana



Breakout Topics:

Communication:
"Are we losing touch?"

Jobs:
"Connecting The Needs"

Transportation:
"The Last Mile"

Skyline College
President's Office
3300 College Drive
San Bruno, CA 94066

SUCCESS SUMMIT 2013



SEPTEMBER 21, 2013
8:00AM - 3:00PM
STUDENT & COMMUNITY CENTER
SKYLINE COLLEGE

Inspiring Innovation *on the Peninsula*

The Success Summit, a full day forum presented by the President's Council of Skyline College provides participants the opportunity to meet face-to-face with experts and key decision makers within the county. In dynamic sessions, participants will grapple with issues of vital concern and how the community can effectively work to shape its future.

Attendees of the Success Summit will include community leaders, nonprofit managers, large business executives and small business owners from throughout the county.

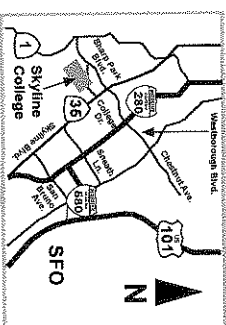
Don't miss this once a year opportunity to communicate in small intimate settings with individuals who are making decisions and shaping your environment - politically, professionally and personally.

Invited panelists include State, County and City elected officials, County educational leaders, major employers, community leaders and stakeholders.

The Success Summit is presented by:
The President's Council, Skyline College

Make the
Connection Today!

Directions



From San Francisco

Take US-101 South toward San Jose
Take I-280 exit towards Daly City
Take Westborough Blvd, exit towards Skyline College
Turn left on Skyline Blvd
Turn right on College Dr.

From Pacifica

Cabrillo Hwy: take ramp toward
Sharp Park Blvd / San Bruno
Turn left on Lundy Way
Turn right on Sharp Park Rd.
Turn right on College Dr.

From San Mateo

US-101 North toward San Francisco
Take I-380 West exit toward San Bruno
Take I-280 North towards San Francisco
Take Avalon Dr. exit towards Westborough Blvd.
Turn left on Westborough Blvd
Turn right on to College Dr.

From Hillsborough

Take I-280 North toward San Francisco
Take Skyline Blvd, exit toward Pacifica
Turn left on College Dr.